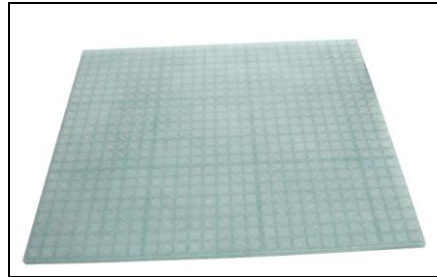




905 Calle Negocio #73123, San Clemente, CA 92673, U. S. A
Tel: 1-866-437-7728, Fax: 1-949-218-9886
E-mail: sales@frpresource.com

GLOBALGRID™
www.frpresource.com
www.globalgriddecking.com



GLOBALGRID™ Translucent Decking

GLOBALGRID™ Translucent Decking is designed for the commercial and residential decks, allowing for maximum light penetration. It is composed of translucent molded fiberglass grating (5/8" thick) and an integral translucent fiberglass cover plate (1/8" thick) with anti-slip diamond pattern surface. With double thickness for cross bar and bearing bar at every 1' interval, GLOBALGRID™ translucent decking substantially improves the strength and stiffness of decks. The light penetration feature permits brightness under the deck in an optional water proof decking surface while blocking out harmful UV. The decking panels are maintenance free with lifetime warranty against termite, cracking or splitting or any other water related damage. The panels are offered in sizes up to 4'x12', easily cut with conventional woodworking tools. It weighs about half of the weight as composite wood, but is at least twice as strong, allowing a span distance of up to 30 to 36" wide. Special clip assemblies (Type W) are provided for attaching the GLOBALGRID™ translucent decking to the substructure when needed.

Installation of GLOBALGRID™ translucent decking is simple. It eliminates 80% or more of the fasteners, and takes only fraction of labor time required for installing conventional decking. The GLOBALGRID™ translucent decking is the ideal replacement for the conventional concrete, wood, plastic and metal decking materials.

A) Key Characteristics of GLOBALGRID™ Translucent Decking:

■ Excellent Light Penetration

GLOBALGRID™ Translucent Decking allows light to pass down, with over 60% light penetration. Ideally suited for areas where light penetration is required or preferred, such as upper decking or marine or garden applications.

■ Full Outdoor Enjoyment

GLOBALGRID™ Translucent Decking transmits light while blocking out harmful UV. Used as decking canopy or in upper decking, GLOBALGRID™ Translucent Decking permits full enjoyment of sunlight and shields the area from rain or debris from the environment. The

product has excellent corrosion resistance, including moisture resistance, perfectly suited for application near coastal environments.

■ **High Strength and Light Weight**

GLOBALGRID™ Translucent Decking is designed to achieve high strength with the use of continuous fiberglass strands and high quality transparent resins. With proper installation, GLOBALGRID™ Translucent Decking meets specified load requirements for steel and are more impact resistant than metals (and concretes).

The unit weight for GLOBALGRID™ Translucent Decking is only **2.98 lbs/sq. ft.** (only about 143 lbs for the standard 4'x12' decking panel, and only about 107 lbs for the 3'x12' decking panel), which is only a fraction of comparable metal panels or composite wood products. The lightweight allows significantly simpler and cheaper installation where a one-man or two-man crew can perform many installations in a matter of hours, presenting a cost effective alternative for decking.

■ **Ergonomic and Anti-Fatigue**

GLOBALGRID™ Translucent Decking has a slight resiliency that makes them comfortable to stand on for long periods. This gives a fatigue-reducing property that eases strain on the feet, legs, and lower backs of people walking or standing on the deck.

■ **Easy to Fabricate and Install**

GLOBALGRID™ Translucent Decking is easily fabricated with hand tools (e.g., cut with a conventional circular saw), and can be installed without welding. It is easy to cut into virtually any size, or to fit around piles and other obstructions.

The special stainless steel W clip assembly is provided for decking attachment to the substructure. The installation of GLOBALGRID™ Translucent Decking may be easily done as a DIY project, due to its lightweight and its simplicity during installation.

With a standard panel size of 4'x12' or 3'x12', GLOBALGRID™ Translucent decking panels can be installed 10x faster compared to the installation of the 1"x4" lumbers or composite wood planks.

■ **Appearance (Uniform and Attractive)**

The anti-slip diamond pattern surface provides a uniform and attractive appearance in colors customized to fit to the environment (light green is default).

■ **Maintenance Free**

Maintenance (such as painting or coating) is never needed for GLOBALGRID™ Decking panels.

■ **Long Service Life**

Over 20 years service life.

■ **Resistance to Slipping and Sliding**

GLOBALGRID™ Translucent Decking features a long-lasting slip-resistant anti-slip diamond pattern surface, providing excellent slip and slid resistance in dry and wet environments. It also offers a very comfortable walking surface even with bare feet for safety.

B) Standard 4'X12' and 3'x12' GLOBALGRID™ Translucent Decking:

Thickness: 3/4" (5/8" translucent molded grating plus 1/8" translucent plate)

Standard size: 4'X12' and 3'x12'. Custom sizes available.

Color: translucent

Unit Weight: 2.98 lb/sq ft.

C) W Clip for GLOBALGRID™ Translucent Decking Installation:



The type W clip is used to secure GLOBALGRID™ translucent decking to the substructure. It is made of stainless steel. One set of clip includes W clip and self screw bolt.

It is very easy to use the W clips, hand electric drill and screwdriver to install the decking to the substructure.

The special design for the spacer component of W clips avoids a tripping hazard. A raised design for the spacer from outside to the center, and sunken in the center, this ensures that the head of the self screw bolt is lower than the level of collar flange of spacer. The outside diameter of the spacer is about 30mm(1-1/4"). The standard self screw will be 45mm(1-3/4") length with 6mm(1/4") diameter or 80mm(3-1/8") length with 6.3mm(1/4") diameter, the different length of the self screw bolt can be available upon the substructure.

D) GLOBALGRID™ Translucent Decking Load & Deflection

Concentrated Load: 12" Wide Strip

3/4" Thickness:

SPAN (in)	LOAD(Lbs/Ft.)					
	50	100	200	300	500	1000
12	<0.010	<0.010	0.018	0.022	0.045	--
18	0.014	0.027	0.058	0.085	0.143	--
24	0.031	0.067	0.134	0.197	--	--
30	0.050	0.098	0.202	0.300	--	--
36	0.094	0.188	0.376	--	--	--

1-1/2" Thickness:

SPAN	LOAD(Lbs/Ft.)							
	(in)	100	250	500	750	1000	1500	2000
12	<0.010	<0.010	0.014	0.021	0.027	0.042	0.055	
18	<0.010	0.019	0.038	0.054	0.070	0.104	0.139	
24	0.016	0.038	0.075	0.112	0.150	0.219	0.301	
36	0.050	0.124	0.246	0.372	--	--	--	
48	0.114	0.286	--	--	--	--	--	

Uniformed Load: 12" Wide Strip

3/4" Thickness

SPAN	LOAD(Lbs/Ft. ²)								
	(in)	50	65	100	150	200	300	500	1000
12	<0.010	<0.010	<0.010	<0.010	<0.010	0.018	0.027	0.054	
18	0.014	0.018	0.027	0.040	0.054	0.081	0.134	--	
24	0.040	0.054	0.081	0.126	0.166	0.246	--	--	
30	0.076	0.103	0.157	0.238	0.314	--	--	--	
36	0.174	0.229	0.350	0.524	--	--	--	--	

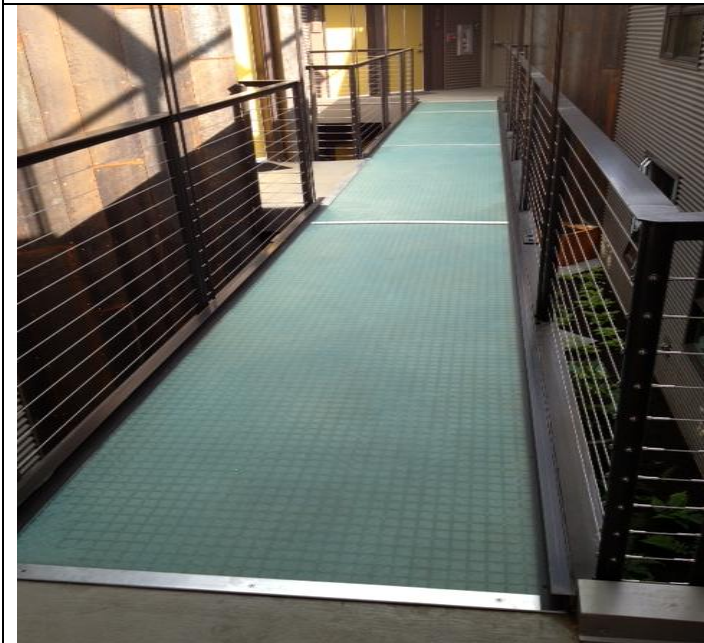
1-1/2" Thickness

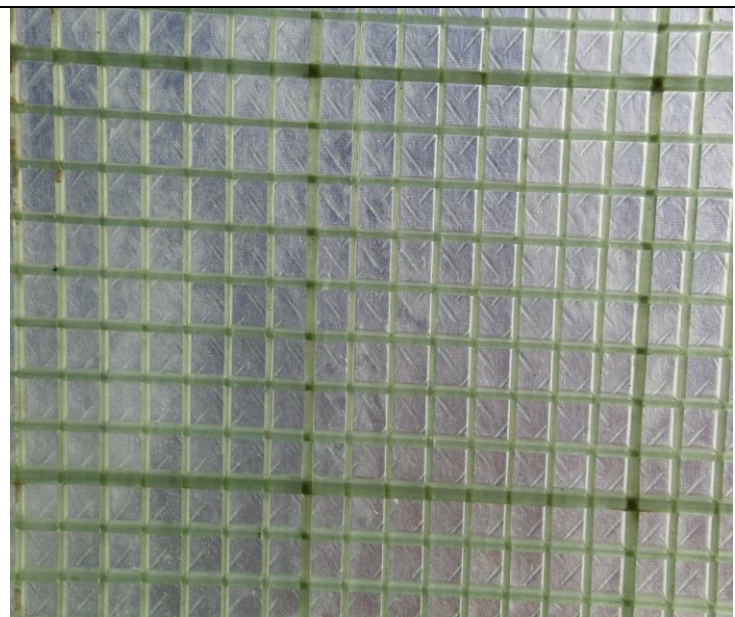
SPAN	LOAD(Lbs/Ft. ²)							
	(in)	25	50	75	100	150	200	250
12	<0.010	<0.010	<0.010	<0.010	<0.010	<0.010	<0.010	<0.010
18	<0.010	<0.010	<0.010	<0.010	<0.010	<0.010	0.015	0.018
24	<0.010	0.011	0.015	0.021	0.030	0.038	0.046	
36	0.026	0.050	0.074	0.100	0.148	0.199	0.252	
48	0.070	0.142	0.211	0.283	0.425	--	--	

Notes:

1. Clear span is 2.0" (50mm) less than the width of decking.
2. The Load & Deflection data provided here is for general information only, actual installation condition may change the deflection amount. FRP Resource Inc will not be held accountable for the deviation.

E) GLOBALGRID™ Translucent Decking Applications





For more information, please contact:

Jason Huang, Ph.D., P.E.

FRP Resource Inc.

Tel: (866) 437-7728 (office), (818) 430-5831 (cell). Fax: (949) 218-9886

E-mail: jason@frpresource.com; Web site: www.globalgriddecking.com